

Multiplexer unit

M-Bus

DESCRIPTION

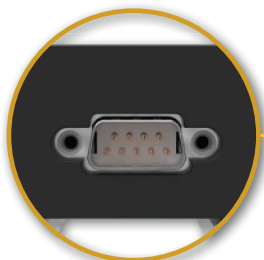
- Multiplexer units allowing to connect different kind and brands of instruments to our D300S V2 and D400S display units
- Possibility to connect and mix different brands together
- RS485 based protocol
- The different units can be mounted on a DIN rail
- Robust construction



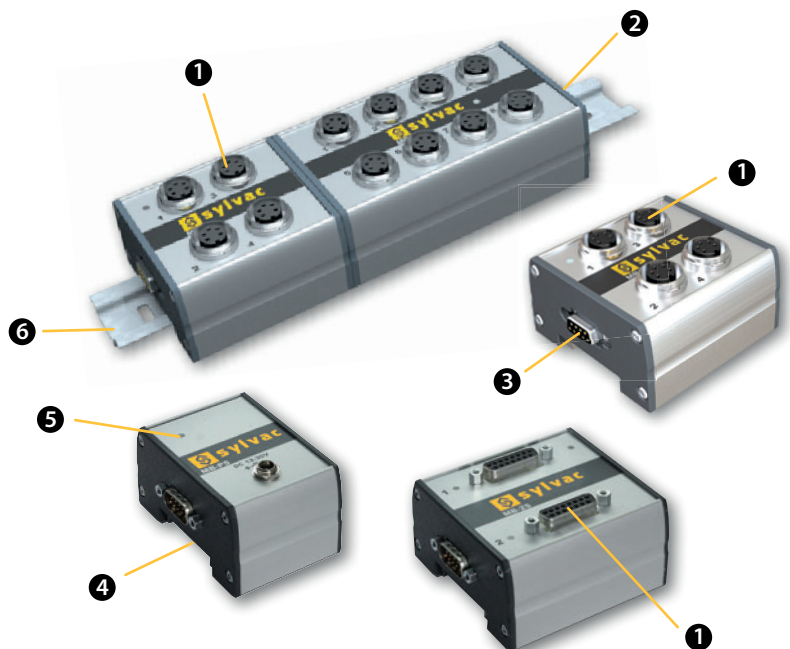
RS485

HARDWARE DESCRIPTION

- ❶ Probes input
- ❷ M-Bus input
- ❸ M-Bus output
- ❹ DIN mounting groove
- ❺ LED / Power module
- ❻ DIN rail



Output cable RS485 to RS485 (925.5609)



Multiplexer unit

M-Bus

TECHNICAL SPECIFICATIONS

	131612.0100	131612.0400	131612.0500	131612.0700	131612.0800	131612.0300
Modele	MB-4C	MB-8i	MB-2S	MB-4D	MB-8D	MB-4P
Instrument type	Sylvac capacitive probes	Inductive ¹⁾	Heidenhain probes (11µA/1VPP)	Digimatic		Probes P12D
Compatibility	D300S & D400S					
Dimensions (L x h x w) mm	107x42x74	131x44x74	82x43x74	107x39x74	107x39x74	107x42x74
Weight kg	0.2	0.3	0.2	0.2	0.2	0.2
Inputs	4	8	2	4	8	4
Case	Anodized aluminium profile					
Output data	RS 485					

¹⁾ Half-bridge: see www.sylvac.ch for information on compatibility

	131612.0900	131612.1000	131612.1100	131612.1200	131612.1300	131612.1400
Modele	MB-IO	MB-PS	MB-RS	MB-TP	MB-BT	MB-AG
Instrument type	PLC I/O	Power-Supply	Computer	Temperature sensor input PT100 and Thermocouple	Instruments with Bluetooth® wireless technology	Plug gauges and Air gauges
Compatibility	D300S & D400S			D400S		
Dimensions (L x h x w) mm	82x39x74	52x42x74	82x39x74	52x51x74	52x39x74	52x64x74
Weight kg	0.2	0.2	0.2	0.1	0.1	0.15
Inputs	8	12-30 VDC	254	1 / 1	8	1
Case	Anodized aluminium profile					
Output data	RS 485					



BASIC INSTRUMENT

- M-Bus module according to technical specifications
- Instruction manual