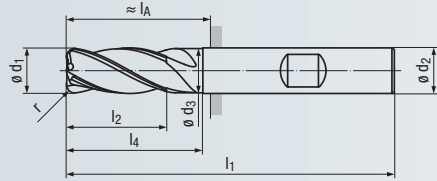
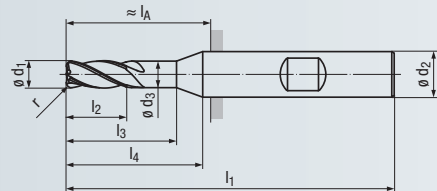


- Multifunktionales Hochleistungswerkzeug
- Mit ENORM-Geometrie
- Vibrationsarme Bearbeitung
- Verschiedene Eckenradien pro Schneidendurchmesser
- Schneiden zur Mitte

- Multi-functional, high performance tool
- With ENORM geometry
- Low-vibration machining
- Several corner radii per cutting diameter
- Centre cutting



Design I₃:



N

HM

DIN 6535
HA
HB

3-5°

35/38°

ER

V_c/f_z
86

Optional



Allround

Beschichtung · Coating

TIALN

Einsatzgebiete – Material (siehe Seite 2)

Applications – material (see page 2)

- In fast allen Werkstoffen, inklusive zähe Werkstoffe, einsetzbar
- Sehr gut zum Schruppen und Schlichten geeignet

- For almost all materials, including tough materials
- Very suitable for roughing and finishing

P	1.1-5.1
M	1.1-4.1
K	1.1-4.2
N	1.2-1.4 1.5-1.6
N	2.1-4.1, 5.2
S	1.1-2.6
H	1.1 1.2-1.3

DIN 6527 – Lange Ausführung · Long design

Eckenradius · Corner radius

Bestell-Code · Order code											2698A	2699A			
ø d ₁ h10	r ±0,02	l ₂	l ₃	l ₁	ø d ₃	l ₄	ø d ₂ h6	l _A	Z (Flutes)	Dimens.- Code					
3	0,1	8	14	57	2,9	20	6	21	4	.003001	●	●			
3	0,3	8	14	57	2,9	20	6	21	4	.003003	●	●			
3	0,5	8	14	57	2,9	20	6	21	4	.003005	●	●			
4	0,1	11	18	57	3,8	20	6	21	4	.004001	●	●			
4	0,3	11	18	57	3,8	20	6	21	4	.004003	●	●			
4	0,4	11	18	57	3,8	20	6	21	4	.004004	●	●			
4	0,5	11	18	57	3,8	20	6	21	4	.004005	●	●			
5	0,1	13	19	57	4,8	20	6	21	4	.005001	●	●			
5	0,3	13	19	57	4,8	20	6	21	4	.005003	●	●			
5	0,5	13	19	57	4,8	20	6	21	4	.005005	●	●			
5	1	13	19	57	4,8	20	6	21	4	.005010	●	●			
6	0,1	13	-	57	5,8	20	6	21	4	.006001	●	●			
6	0,5	13	-	57	5,8	20	6	21	4	.006005	●	●			
6	1,0	13	-	57	5,8	20	6	21	4	.006010	●	●			
6	1,5	13	-	57	5,8	20	6	21	4	.006015	●	●			
8	0,15	19	-	63	7,7	25	8	27	4	.008001	●	●			
8	0,5	19	-	63	7,7	25	8	27	4	.008005	●	●			
8	1	19	-	63	7,7	25	8	27	4	.008010	●	●			
8	1,5	19	-	63	7,7	25	8	27	4	.008015	●	●			
8	2	19	-	63	7,7	25	8	27	4	.008020	●	●			
10	0,15	22	-	72	9,5	30	10	32	4	.010001	●	●			
10	0,5	22	-	72	9,5	30	10	32	4	.010005	●	●			
10	1	22	-	72	9,5	30	10	32	4	.010010	●	●			
10	1,5	22	-	72	9,5	30	10	32	4	.010015	●	●			
10	2	22	-	72	9,5	30	10	32	4	.010020	●	●			
12	0,2	26	-	83	11,5	35	12	38	4	.012002	●	●			
12	0,5	26	-	83	11,5	35	12	38	4	.012005	●	●			
12	1	26	-	83	11,5	35	12	38	4	.012010	●	●			
12	1,5	26	-	83	11,5	35	12	38	4	.012015	●	●			
12	2	26	-	83	11,5	35	12	38	4	.012020	●	●			
12	3	26	-	83	11,5	35	12	38	4	.012030	●	●			
14	1	26	-	83	13,5	35	14	38	4	.014010	●	●			
16	0,3	32	-	92	15,5	40	16	44	4	.016003	●	●			
16	0,5	32	-	92	15,5	40	16	44	4	.016005	●	●			
16	1	32	-	92	15,5	40	16	44	4	.016010	●	●			
16	1,5	32	-	92	15,5	40	16	44	4	.016015	●	●			
16	2	32	-	92	15,5	40	16	44	4	.016020	●	●			
16	3	32	-	92	15,5	40	16	44	4	.016030	●	●			
16	4	32	-	92	15,5	40	16	44	4	.016040	●	●			
20	0,3	38	-	104	19,5	50	20	54	4	.020003	●	●			
20	0,5	38	-	104	19,5	50	20	54	4	.020005	●	●			
20	1	38	-	104	19,5	50	20	54	4	.020010	●	●			
20	1,5	38	-	104	19,5	50	20	54	4	.020015	●	●			
20	2	38	-	104	19,5	50	20	54	4	.020020	●	●			
20	3	38	-	104	19,5	50	20	54	4	.020030	●	●			

● = Lagerwerkzeug, siehe Preisliste · Stock tool, see price list
○ = Kurzfristig lieferbar, Preis auf Anfrage · Available at short notice, price on request

Andere Eckenradien auf Anfrage lieferbar
Other corner radii available on request

Product Finder

- NR
- NF
- N**
- HF
- H
- WR
- WF
- W
- V_c / f_z

HM

- Product Finder
- NR
- NF
- N**
- HF
- H
- WR
- WF
- W
- v_c / f_z

- Multifunktionales Hochleistungswerkzeug
- Mit ENORM-Geometrie
- Vibrationsarme Bearbeitung
- Verschiedene Eckenradien pro Schneiddurchmesser
- Innere Kühlschmierstoff-Zufuhr, Austritt axial (ICA)

- Multi-functional, high performance tool
- With ENORM geometry
- Low-vibration machining
- Several corner radii per cutting diameter
- Internal coolant supply, axial exit (ICA)

N

ICA

HM

DIN 6535
HA
HB

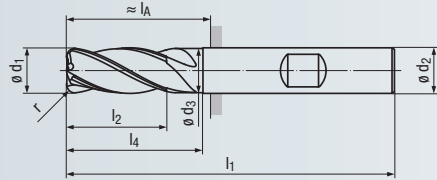
35/38°

ER

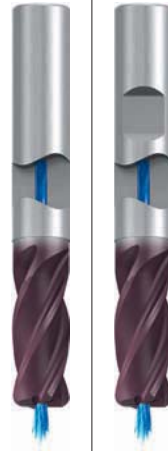
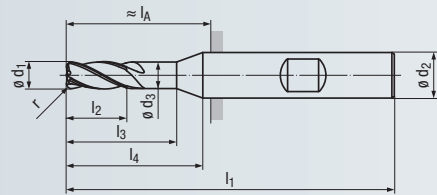
3-5°

v_c / f_z
86

Optional



Design l_3 :



Allround

Beschichtung · Coating

TIALN

Einsatzgebiete – Material (siehe Seite 2)

- In fast allen Werkstoffen, inklusive zähe Werkstoffe, einsetzbar
- Sehr gut zum Schruppen und Schlichten geeignet

Applications – material (see page 2)

- For almost all materials, including tough materials
- Very suitable for roughing and finishing

P	1.1-5.1
M	1.1-4.1
K	1.1-4.2
N	1.2-1.4 1.5-1.6
N	2.1-4.1, 5.2
S	1.1-2.6
H	1.1 1.2-1.3

DIN 6527 – Lange Ausführung · Long design

Eckenradius · Corner radius

Bestell-Code · Order code											2698AZ	2699AZ			
$\varnothing d_1$ h10	r $\pm 0,02$	l_2	l_3	l_1	$\varnothing d_3$	l_4	$\varnothing d_2$ h6	l_A 	Z (Flutes)	Dimens.-Code					
3	0,3	8	14	57	2,9	20	6	21	4	.003003	●	●			
3	0,5	8	14	57	2,9	20	6	21	4	.003005	●	●			
4	0,3	11	18	57	3,8	20	6	21	4	.004003	●	●			
4	0,5	11	18	57	3,8	20	6	21	4	.004005	●	●			
5	0,3	13	19	57	4,8	20	6	21	4	.005003	●	●			
5	0,5	13	19	57	4,8	20	6	21	4	.005005	●	●			
6	0,5	13	–	57	5,8	20	6	21	4	.006005	●	●			
6	1,0	13	–	57	5,8	20	6	21	4	.006010	●	●			
6	1,5	13	–	57	5,8	20	6	21	4	.006015	●	●			
8	0,5	19	–	63	7,7	25	8	27	4	.008005	●	●			
8	1	19	–	63	7,7	25	8	27	4	.008010	●	●			
8	1,5	19	–	63	7,7	25	8	27	4	.008015	●	●			
8	2	19	–	63	7,7	25	8	27	4	.008020	●	●			
10	1	22	–	72	9,5	30	10	32	4	.010010	●	●			
10	1,5	22	–	72	9,5	30	10	32	4	.010015	●	●			
10	2	22	–	72	9,5	30	10	32	4	.010020	●	●			
12	1	26	–	83	11,5	35	12	38	4	.012010	●	●			
12	1,5	26	–	83	11,5	35	12	38	4	.012015	●	●			
12	2	26	–	83	11,5	35	12	38	4	.012020	●	●			
12	3	26	–	83	11,5	35	12	38	4	.012030	●	●			
16	1	32	–	92	15,5	40	16	44	4	.016010	●	●			
16	1,5	32	–	92	15,5	40	16	44	4	.016015	●	●			
16	2	32	–	92	15,5	40	16	44	4	.016020	●	●			
16	3	32	–	92	15,5	40	16	44	4	.016030	●	●			
20	1,5	38	–	104	19,5	50	20	54	4	.020015	●	●			
20	2	38	–	104	19,5	50	20	54	4	.020020	●	●			
20	3	38	–	104	19,5	50	20	54	4	.020030	●	●			

Andere Eckenradien auf Anfrage lieferbar
Other corner radii available on request