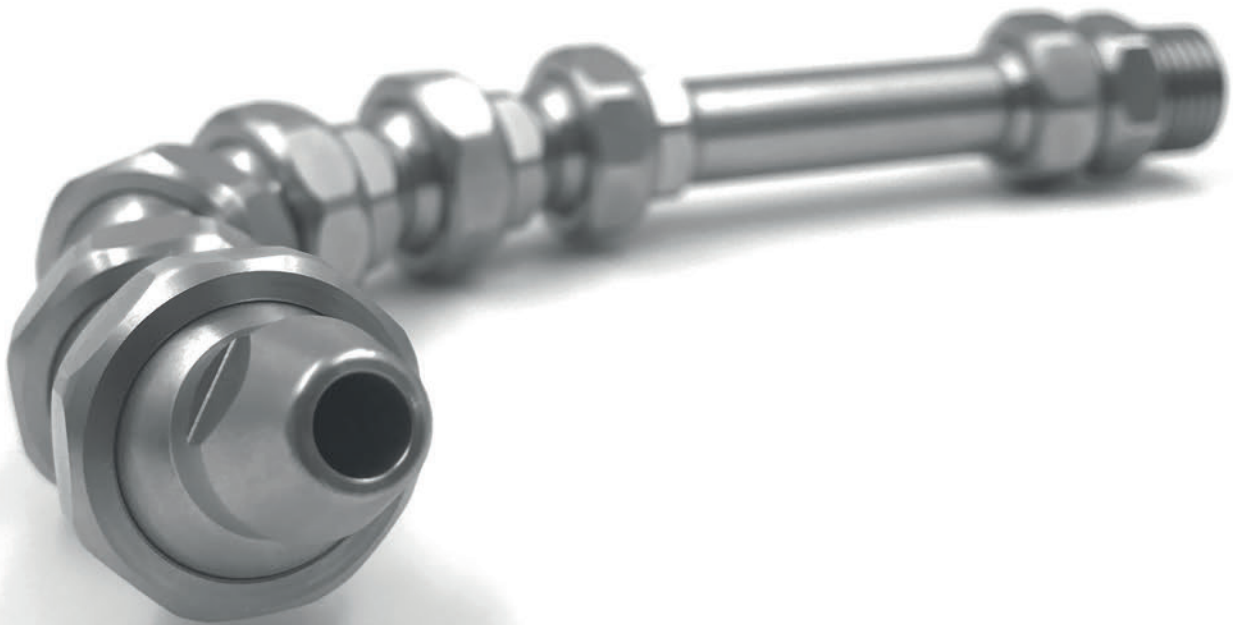


PRODUKTÜBERSICHT

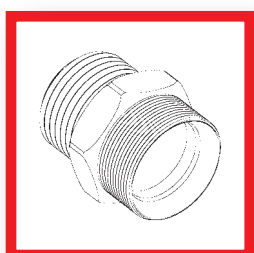
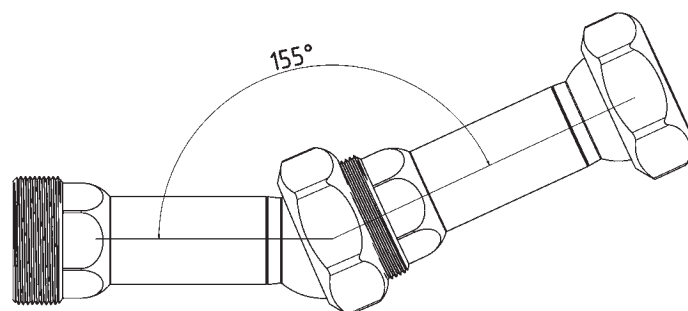
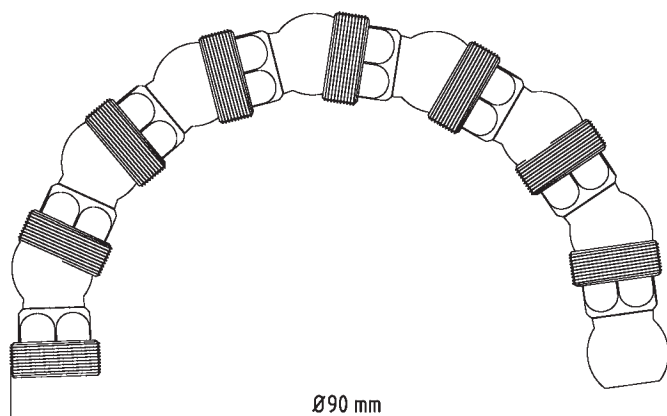
Typ1 [1/4"]



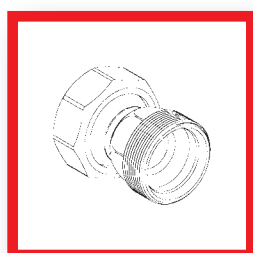
Das Typ1 System für alle Maschinen-Anwendungen im Bereich bis max. $\pm 170\text{l/min}$. Mit Runddüsen Größen von $\text{Ø}1,6\text{ mm}$ bis $\text{Ø}5,0\text{ mm}$ und eine Vielzahl an Flachdüsen und Düsen mit mehreren Bohrungen ist dieses System ein Standard für jede Maschine. Das große Sortiment an Maschinenadapter von $\text{M}8 \times 1,0$ über $\text{M}14 \times 1,5$ und $\text{G}3/8"$ bis hin zu verschiedenen Kugeladapter mit $\text{Ø}14,0\text{ mm}$ und natürlich auch wieder Grund- und Winkelelemente garantieren für eine reibungslose Installation.

TECHNISCHE DATEN:

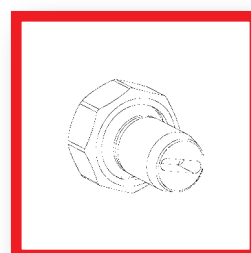
- Größe Typ1 (1/4")
- Durchlass Ø 5,8 mm
- Druckbeständig über 100 bar
- Einsatzbereich -30°C bis +60°C
- Optional ES-System bis +300°C (auf Anfrage erhältlich)
- Gewinde (Elemente) M14x1
- Material 1.4305 (V2A)



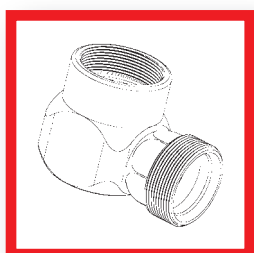
MASCHINENADAPTER



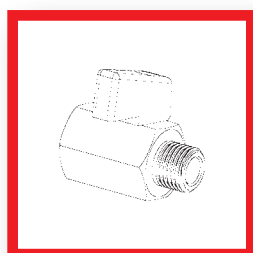
GRUNDELEMENTE



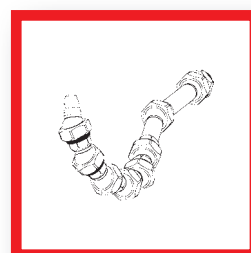
DÜSEN



WINKELELEMENTE



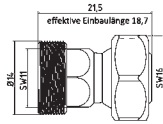
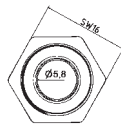
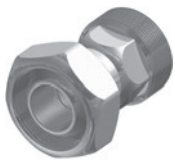
ZUBEHÖR



GRUNDSET Typ1

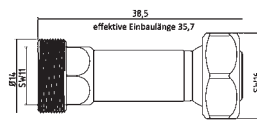
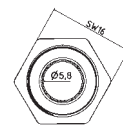
Typ1 [1/4" System]

Grundelemente | Basic Elements



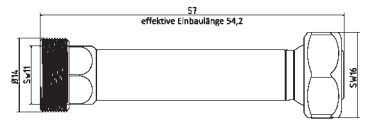
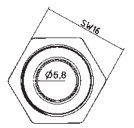
1-GE

$l = 21,5$ mm effektiv $l = 18,7$ mm
 $l = 21,5$ mm effective $l = 18,7$ mm



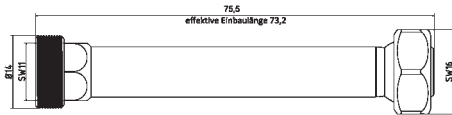
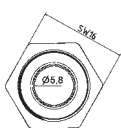
1-GE-2

$l = 38,5$ mm effektiv $l = 35,7$ mm
 $l = 38,5$ mm effective $l = 35,7$ mm



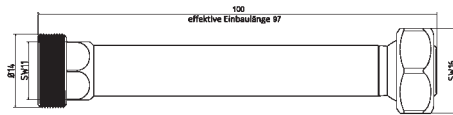
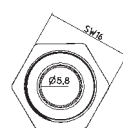
1-GE-3

$l = 57$ mm effektiv $l = 54,2$ mm
 $l = 57$ mm effective $l = 54,2$ mm



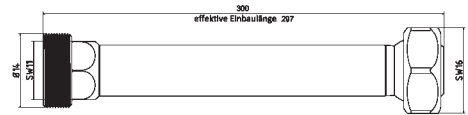
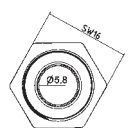
1-GE-4

$l = 75,5$ mm effektiv $l = 73,2$ mm
 $l = 75,5$ mm effective $l = 73,2$ mm



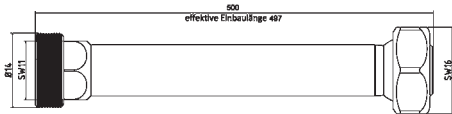
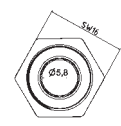
1-GE-100

$l = 100$ mm effektiv $l = 97$ mm
 $l = 100$ mm effective $l = 97$ mm



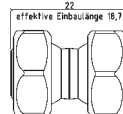
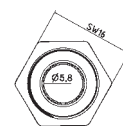
1-GE-300

$l = 300$ mm effektiv $l = 297$ mm
 $l = 300$ mm effective $l = 297$ mm



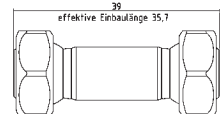
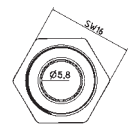
1-GE-500

$l = 500$ mm effektiv $l = 497$ mm
 $l = 500$ mm effective $l = 497$ mm



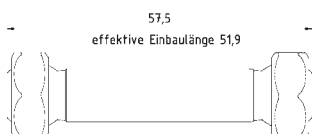
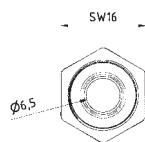
1-GE-DK

$l = 22$ mm effektiv $l = 18,7$ mm Doppelkugel
 $l = 22$ mm effective $l = 18,7$ mm double ball



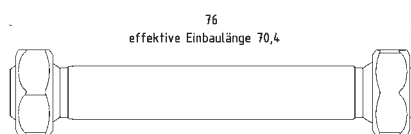
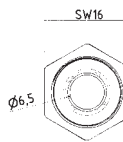
1-GE-2-DK

$l = 39$ mm effektiv $l = 35,7$ mm Doppelkugel
 $l = 39$ mm effective $l = 35,7$ mm double ball



1-GE-3-DK

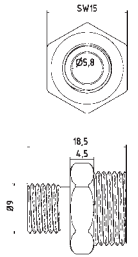
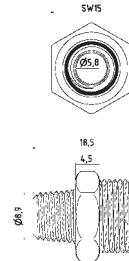
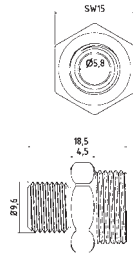
$l = 57,5$ mm effektiv $l = 51,9$ mm Doppelkugel
 $l = 57,5$ mm effective $l = 51,9$ mm double ball



1-GE-4-DK

$l = 76$ mm effektiv $l = 70,4$ mm Doppelkugel
 $l = 76$ mm effective $l = 70,4$ mm double ball

Maschinen-/Düsenadapter | Machine-/Nozzle Adapter



1-AD-18

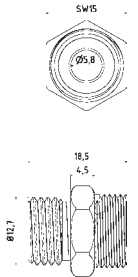
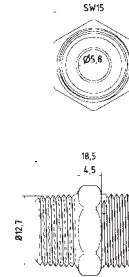
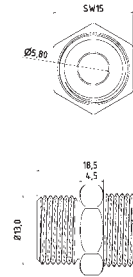
Adapterstück G 1/8"
adaptor piece thread 1/8"

1-AD-18-PT

Adapterstück G 1/8" PT (Withworth-Gewinde)
adaptor piece thread 1/8" PT (NPT thread)

1-AD-18-U

Adapterstück G 1/8" U (Gewinde unterschritten)
adaptor piece thread 1/8" U (Undercut thread)



1-AD-14

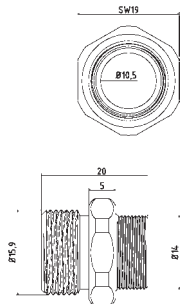
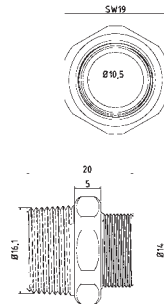
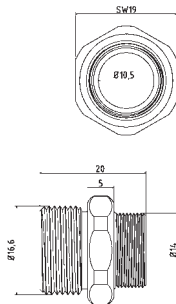
Adapterstück G 1/4"
adaptor piece thread 1/4"

1-AD-14-PT

Adapterstück G 1/4" PT (Withworth-Gewinde)
adaptor piece thread 1/4" PT (NPT thread)

1-AD-14-U

Adapterstück G 1/4" U (Gewinde unterschritten)
adaptor piece thread 1/4" U (Undercut thread)



1-AD-38

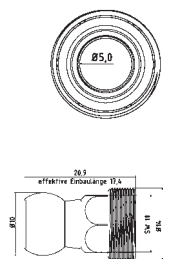
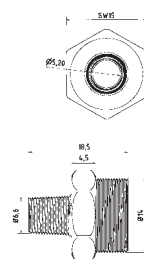
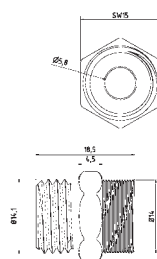
Adapterstück G 3/8"
adaptor piece thread 3/8"

1-AD-38-PT

Adapterstück G 3/8" PT (Withworth-Gewinde)
adaptor piece thread 3/8" PT (NPT thread)

1-AD-38-U

Adapterstück G 3/8" U (Gewinde unterschritten)
adaptor piece thread 3/8" U (Undercut thread)



1-AD-9-16-20UNF

Adapterstück G 9/16"
adaptor piece thread 9/16"

1-AD-1-16PT

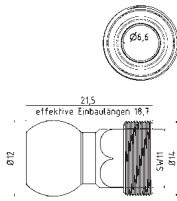
Adapterstück G 1/16" PT (Withworth-Gewinden)
adaptor piece thread 1/16" PT (NPT thread)

1-AD-K10

Adapterstück Kugel Ø 10 (z.B. Traub)
adaptor piece ball Ø 10 mm (e.g. Traub)

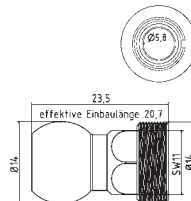
Typ1 [1/4" System]

Maschinen-/Düsenadapter | Machine-/Nozzle Adapter



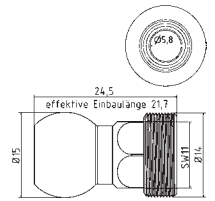
1-AD-K12

Adapterstück Kugel Ø 12 (z.B. MORI SEIKI)
adaptor piece ball Ø 12 mm (e.g. MORI SEIKI)



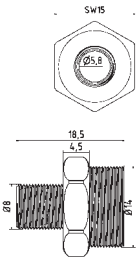
1-AD-K14

Adapterstück Kugel Ø 14 (z.B. Wenk)
adaptor piece ball Ø 14 mm (e.g. Wenk)



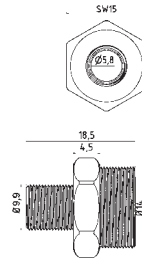
1-AD-K15

Adapterstück Kugel Ø 15 (z.B. Okuma)
adaptor piece ball Ø 15 mm (e.g. Okuma)



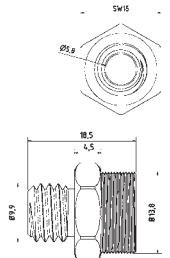
1-AD-81

Adapterstück M8 x 1
adaptor piece M8 x 1 metric thread



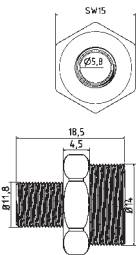
1-AD-101

Adapterstück M10 x 1
adaptor piece M10 x 1 metric thread



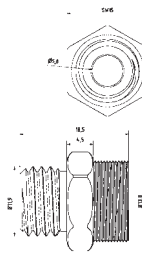
1-AD-101.5

Adapterstück M10 x 1.5
adaptor piece M10 x 1.5 metric thread



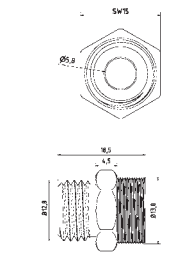
1-AD-121

Adapterstück M 12 x 1
adaptor piece M 12 x 1 metric thread



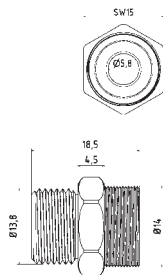
1-AD-121.5

Adapterstück M 12 x 1,5
adaptor piece M 12 x 1,5 metric thread



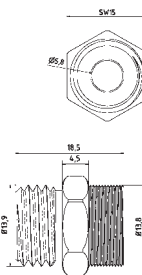
1-AD-131.5

Adapterstück M 13 x 1,5
adaptor piece M 13 x 1,5 metric thread



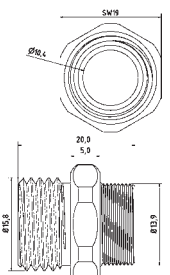
1-AD-141

Adapterstück M 14 x 1
adaptor piece M 14 x 1 metric thread



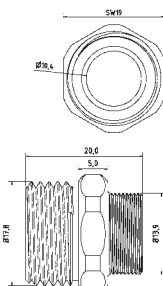
1-AD-141.5

Adapterstück M 14 x 1,5
adaptor piece M 14 x 1,5 metric thread



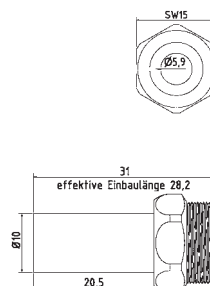
1-AD-161.5

Adapterstück M 16 x 1,5
adaptor piece M 16 x 1,5 metric thread



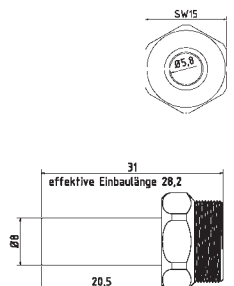
1-AD-181.5

Adapterstück M 18 x 1,5
adaptor piece M 18 x 1,5 metric thread



1-AD-10L

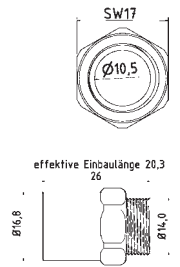
Adapterstück zu Hydraulik-Verschraubung 10 L
adaptor piece to hydraulic system 10 L



1-AD-8L

Adapterstück zu Hydraulik-Verschraubung 8 L
adaptor piece to hydraulic system 8 L

Maschinen-/Düsenadapter | Machine-/Nozzle Adapter



1-AD-I121-Typ1

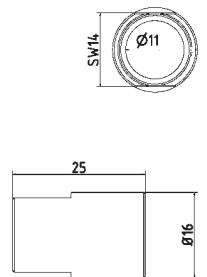
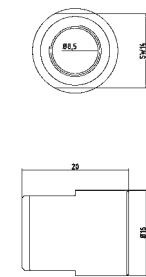
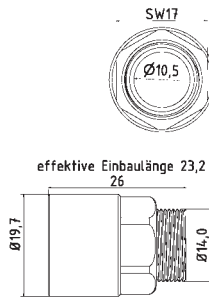
Adapterstück M12 x 1 Innengewinde auf Hirt-Line Typ1 Aussengewinde
adaptor piece M12 x 1 female thread to Hirt-Line type1 male thread

1-AD-I121.5-Typ1

Adapterstück M12 x 1.5 Innengewinde auf Hirt-Line Typ1 Aussengewinde
adaptor piece M12 x 1.5 female thread to Hirt-Line type1 male thread

1-AD-I141.5-Typ1

Adapterstück M14 x 1.5 Innengewinde auf Hirt-Line Typ1 Aussengewinde
adaptor piece M14 x 1.5 female thread to Hirt-Line type1 male thread



1-AD-I161.5-Typ1

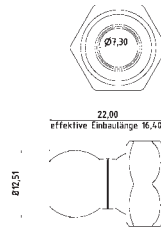
Adapterstück M16 x 1.5 Innengewinde auf Hirt-Line Typ1 Aussengewinde
adaptor piece M16 x 1.5 female thread to Hirt-Line type1 male thread

1-AD-1GE-18

Adapterstück für Fremddüsen mit Außengewinde, IG 1-GE auf IG 1/8"
adapter piece for external nozzles with male thread, female 1-GE to female 1/8"

1-AD-1GE-14

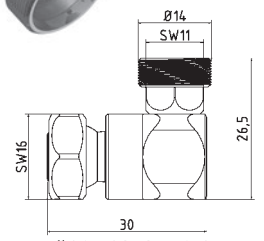
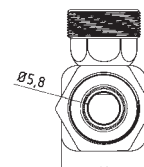
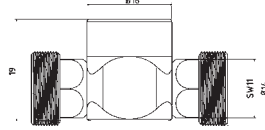
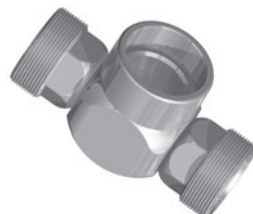
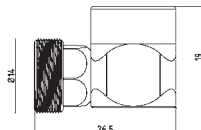
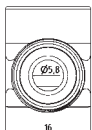
Adapterstück für Fremddüsen mit Außengewinde, IG 1-GE auf IG 1/4"
adapter piece for external nozzles with male thread, female 1-GE to female 1/4"



1-AD-LL

Adapterstück Loc-Line Typ 1
adaptor piece Loc-Line Type 1

Winkelelemente | Elbows



1-WV-1

Winkelverschraubung
elbow piece fixed

1-WV-2

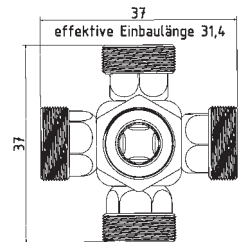
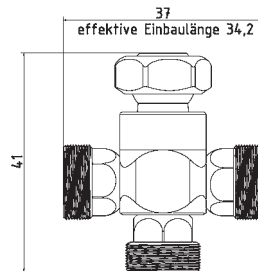
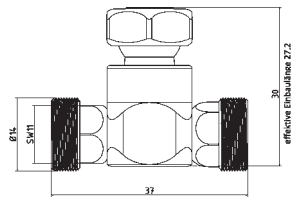
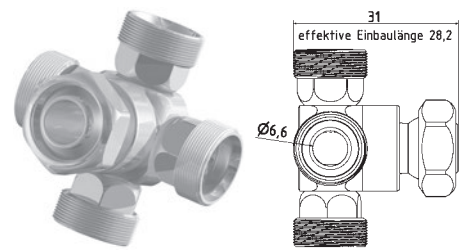
T-Stück
T-piece fixed

1-WV-1K

Winkelverschraubung mit Kugelstück
elbow piece moveable

Typ1 [1/4" System]

Winkelemente | Elbows



1-WV-2K

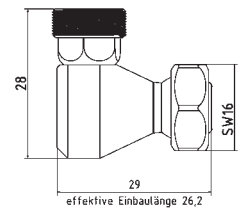
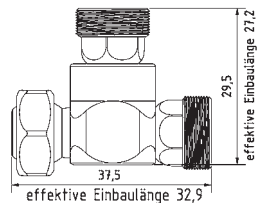
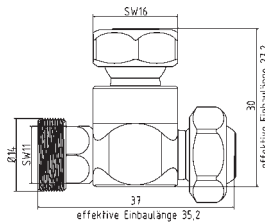
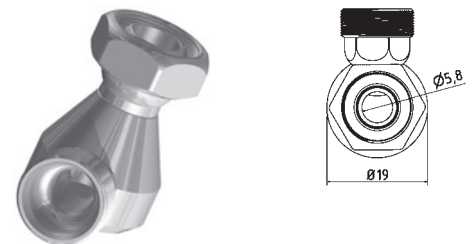
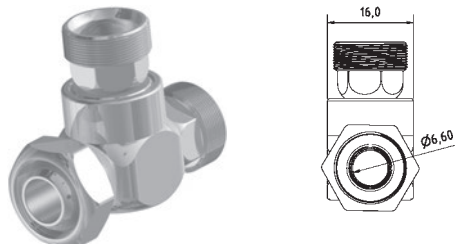
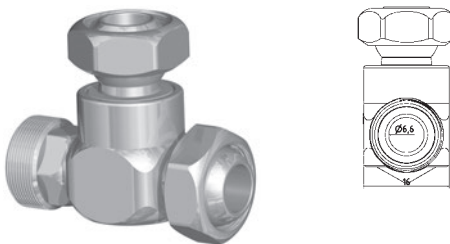
T-Stück mit Kugelstück
T-piece moveable

1-WV-3K

Kreuz-Stück mit Kugelstück
cross piece moveable

1-WV-4K

Stern-Stück mit Kugelstück
star piece moveable



1-WV-R

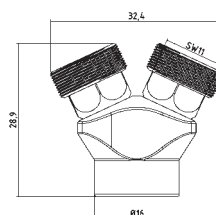
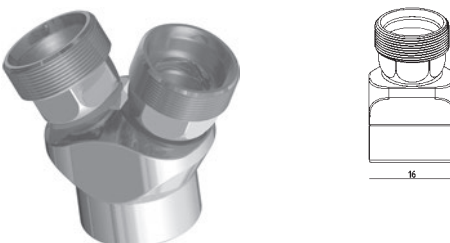
Verschlussstück zu Ringdüse
locking tappet to ring nozzle

1-WV-R-2K

T-Stück für Ring und Düse
T-piece for ring and nozzle

1-WI

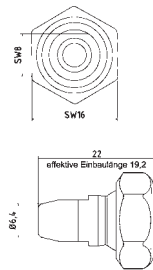
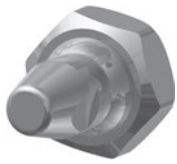
Winkelstück für Leitungen
corner piece for pipelines



1-YV

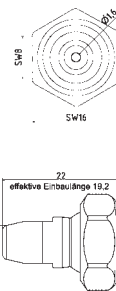
Y-Stück 50°
Y-piece 50°

Düsen | Nozzles



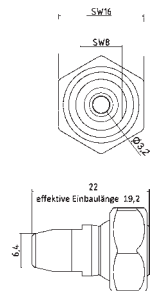
1-DU-0

Düse ohne Bohrung
nozzle straight without drilling



1-DU-16

Düse gerade Bohrung Ø 1,6 mm
nozzle straight Ø 1,6 mm



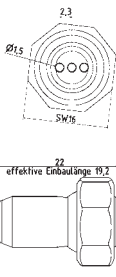
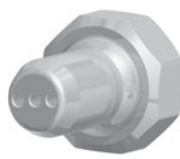
1-DU-32

Düse gerade Bohrung Ø 3,2 mm
nozzle straight Ø 3,2 mm



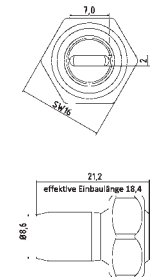
1-DU-50

Düse gerade Bohrung Ø 5,0 mm
nozzle straight Ø 5,0 mm



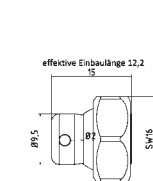
1-DU-3-16

Düse gerade Bohrung 3 x Ø 1,6 mm
nozzle straight 3 x Ø 1,6 mm



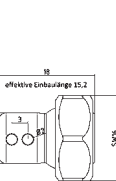
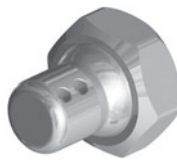
1-DU-72

Düse mit Schlitz 7 x 2,0 mm
nozzle straight with slit 7 x 2,0 mm



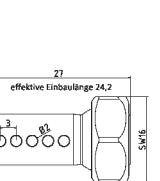
1-DU-90-1

Düse 90° Bohrung 1 x Ø 2 mm
nozzle 90° drill hole 1 x Ø 2 mm



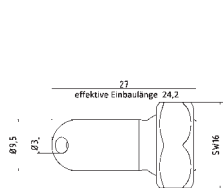
1-DU-90-2

Düse 90° Bohrung 2 x Ø 2 mm
nozzle 90° drill hole 2 x Ø 2 mm



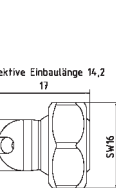
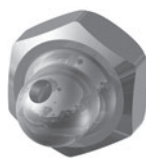
1-DU-90-5

Düse 90° Bohrung 5 x Ø 2 mm
nozzle 90° drill hole 5 x Ø 2 mm



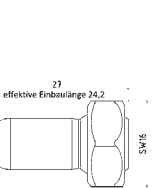
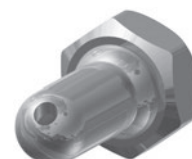
1-DU-30

Düse 30° Bohrung Ø 3 mm
nozzle 30° drill hole Ø 3 mm



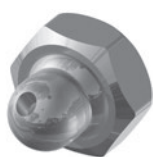
1-DU-30-EK

Düse 30° Bohrung Ø 3 mm extra kurz
nozzle 30° drill hole Ø 3 mm extra short



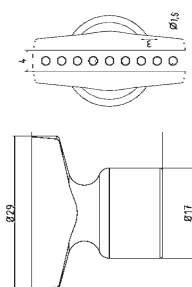
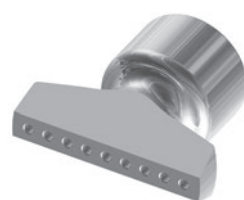
1-DU-60

Düse 60° Bohrung Ø 3 mm
nozzle 60° drill hole Ø 3 mm



1-DU-60-EK

Düse 60° Bohrung Ø 3 mm extra kurz
nozzle 60° drill hole Ø 3 mm extra short

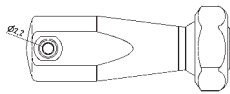
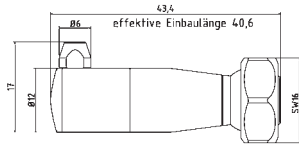


1-DU-BL

Düse Breit mit Bohrungen 9 x Ø 1,5 mm
nozzle broadly with drillings 9 x Ø 1,5 mm

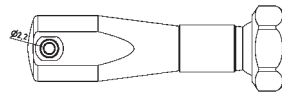
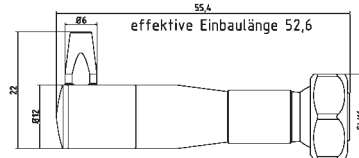
Typ1 [1/4" System]

Düsen | Nozzles



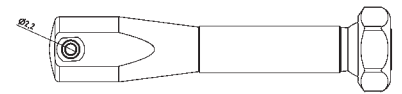
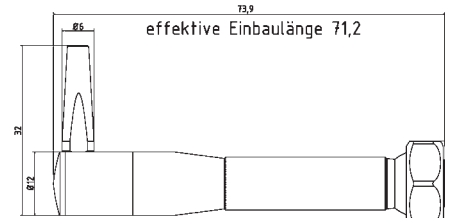
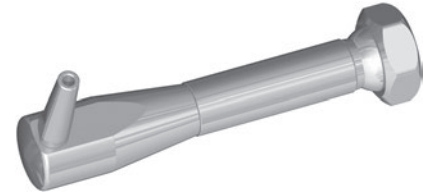
1-HA-DU

Halterung Düse klein I = 40 inkl. 3 Düsen
small nozzle holder I = 40 incl. 3 nozzles



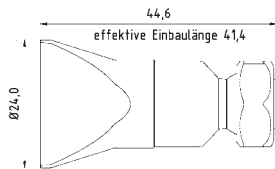
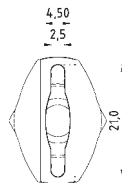
1-HA-DU-2

Halterung Düse klein I = 55 inkl. 3 Düsen
small nozzle holder I = 55 incl. 3 nozzles



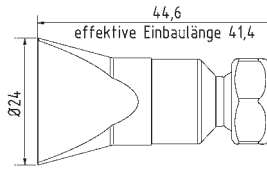
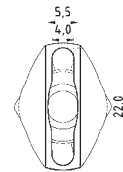
1-HA-DU-3

Halterung Düse klein I = 70 inkl. 3 Düsen
small nozzle holder I = 70 incl. 3 nozzles



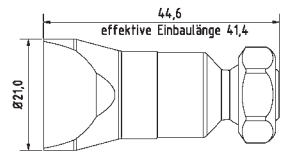
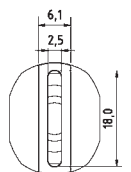
1-DU-SL-SS

Flachdüse Breit mit Schlitz 21 x 2,5 mm
Streustrahl
flat nozzle broadly with slit 21 x 2,5 mm
scattered beam



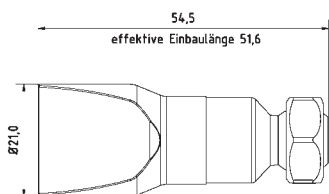
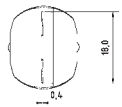
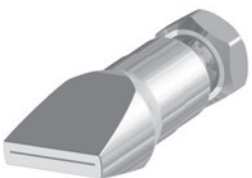
1-DU-SL-25

Flachdüse Breit mit Schlitz 22 x 4,0 mm
Streustrahl zum Schwemmen
flat nozzle broadly with slit 22 x 4,0 mm scatter-
red beam



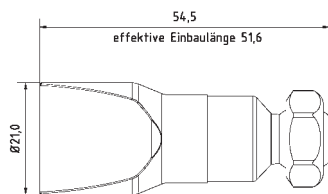
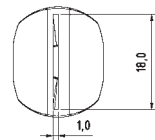
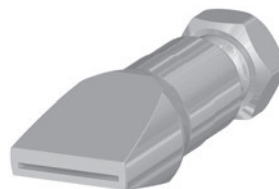
1-DU-SL-GS

Flachdüse Breit mit Schlitz 18 x 2,5 mm
gerader Strahl
flat nozzle broadly with slit 18 x 2,5 mm straight
jet



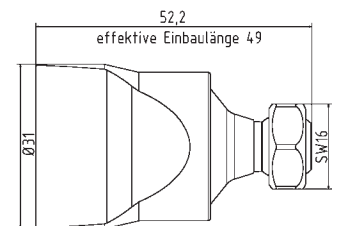
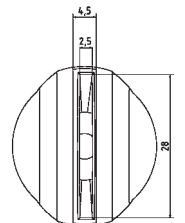
1-DU-SL-25-GS-0.4

Flachdüse Breit mit Schlitz 18 x 0,4 mm
gerader Strahl
flat nozzle broadly with slit 18 x 0,4 mm
straight jet



1-DU-SL-25-GS-1.0

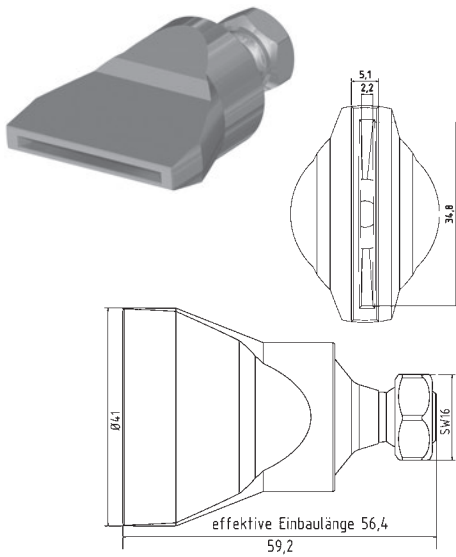
Flachdüse Breit mit Schlitz 18 x 1,0 mm
gerader Strahl
flat nozzle broadly with slit 18 x 1,0 mm
straight jet



1-DU-SL-31-GS

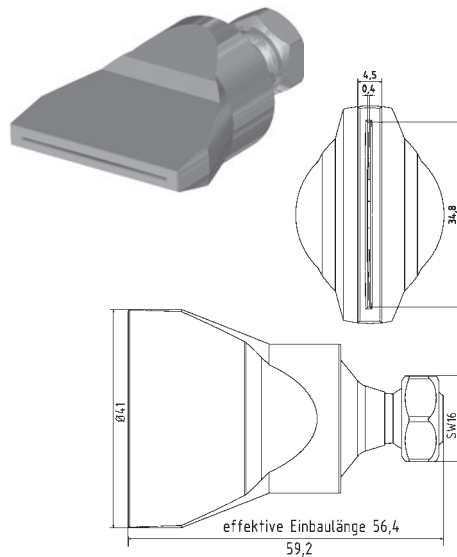
Flachdüse Breit mit Schlitz 28 x 2,5 mm
gerader Strahl
flat nozzle broadly with slit 28 x 2,5 mm
straight jet

Düsen | Nozzles



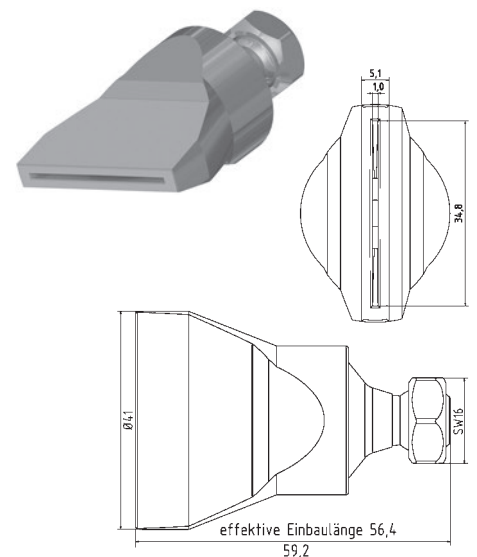
1-DU-SL-50-GS

Flachdüse Schlitzbreite 35 x 2,2 mm
gerader Strahl
*flat nozzle broadly with slit 35 x 2,2 mm
straight jet*



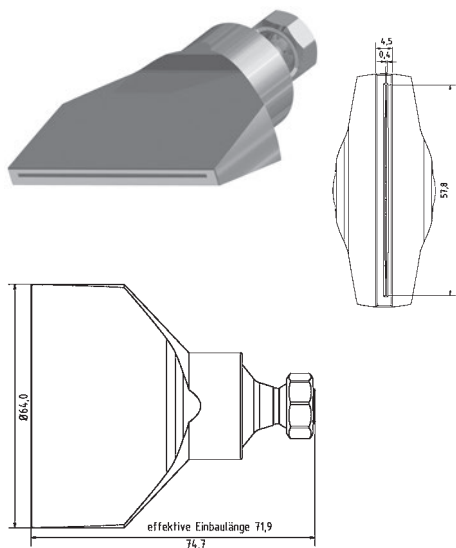
1-DU-SL-50-GS-0.4

Flachdüse Schlitzbreite 35 x 0,4 mm
gerader Strahl
*flat nozzle broadly with slit 35 x 0,4 mm
straight jet*



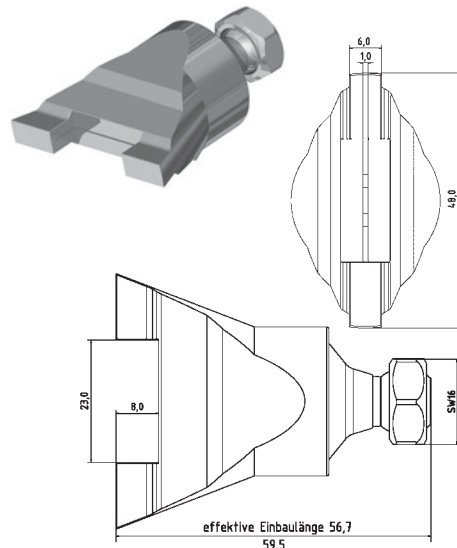
1-DU-SL-50-GS-1.0

Flachdüse Schlitzbreite 35 x 1,0 mm
gerader Strahl
*flat nozzle broadly with slit 35 x 1,0 mm
straight jet*



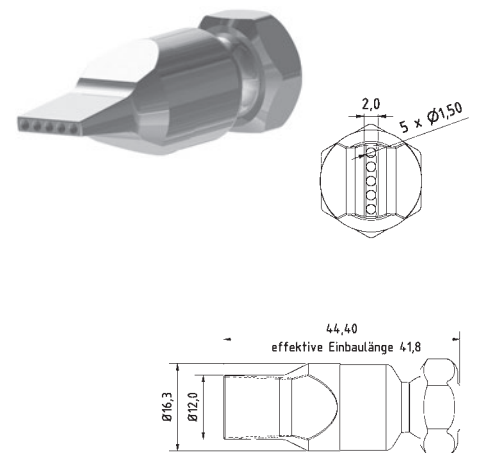
1-DU-SL-65-GS-0.4

Flachdüse Schlitzbreite 58 x 0,4 mm
gerader Strahl
*flat nozzle broadly with slit 58 x 0,4 mm
straight jet*



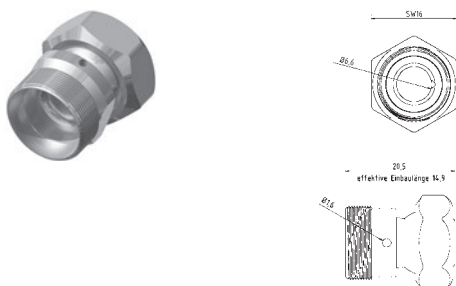
1-DU-1912-SA

Flachdüse Schlitzbreite 23 mm
mit seitlicher Kühlung gerader Strahl
*flat nozzle broadly with slit 23 mm
with lateral cooling straight jet*



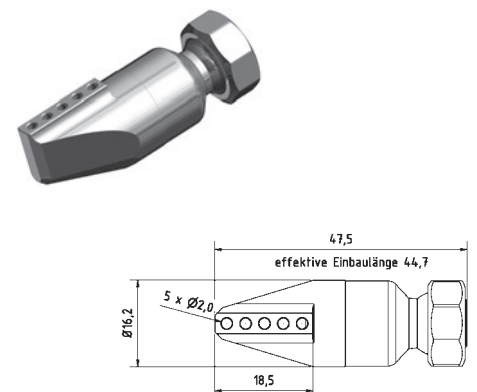
1-DU-LL-5-15

Düse gerade Bohrungen 5 x Ø 1,5 mm
nozzle straight drill hole 5 x Ø 1,5 mm



1-DU-R

Ringdüsen Element Bohrung Ø 1,6 mm
ring nozzle element drill hole Ø 1,6 mm

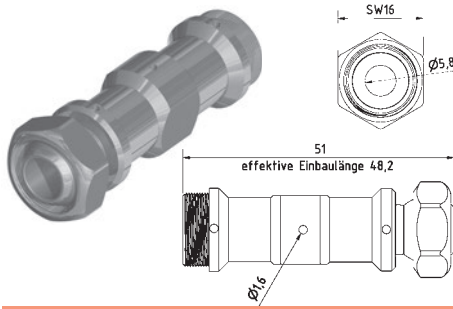


1-DU-LL-90-5-2

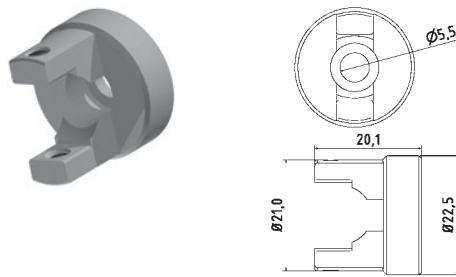
Düse 90° Bohrungen 5 x Ø 2 mm
nozzle 90° drill hole 5 x Ø 2 mm

Typ1 [1/4" System]

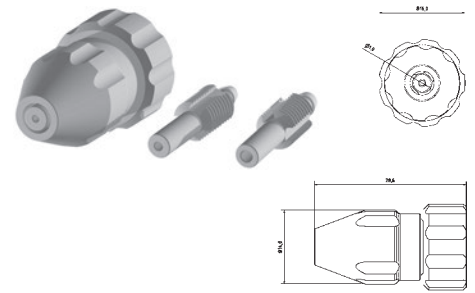
Düsen und Halterungen | Nozzles and Holder



1-DU-EL3
Duschelement mit Bohrungen 3 x \varnothing 1,6 mm
shower element drillings 3 x \varnothing 1,6 mm

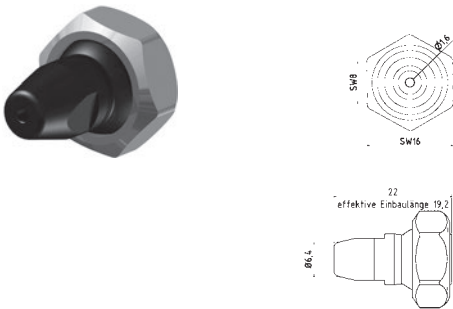


1-DU-ELH
Halterung zu Duschelement (inkl. Feststellschrauben)
holder to shower element (incl. Screws)

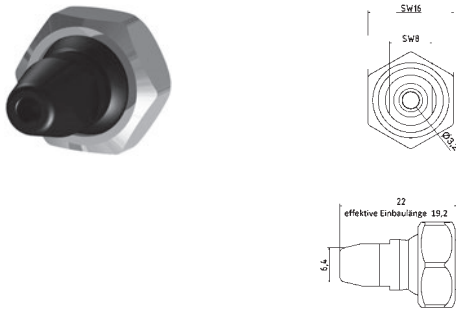


1-DU-Mini
Düse Minimalmengenschmiersystem Set
für 2 mm, 2,5 mm und 3 mm Schlauch
nozzle minimum lubrication system set
for 2 mm, 2,5 mm and 3 mm pipe

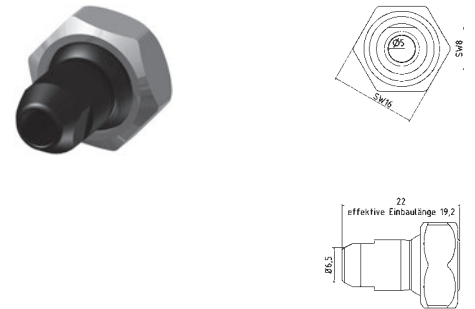
Kunststoff-Düsen | Plastic Nozzles



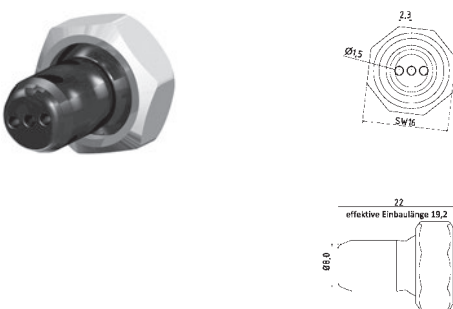
KU-1-DU-16
Kunststoff-Düse gerade Bohrung \varnothing 1,6 mm
plastic nozzle straight \varnothing 1,6 mm



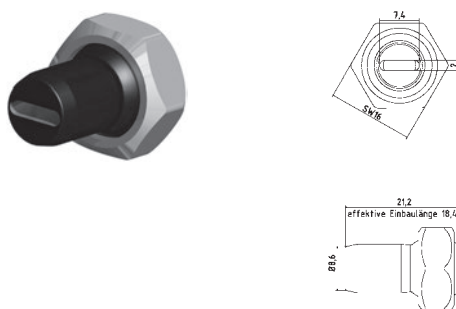
KU-1-DU-32
Kunststoff-Düse gerade Bohrung \varnothing 3,2 mm
plastic nozzle straight \varnothing 3,2 mm



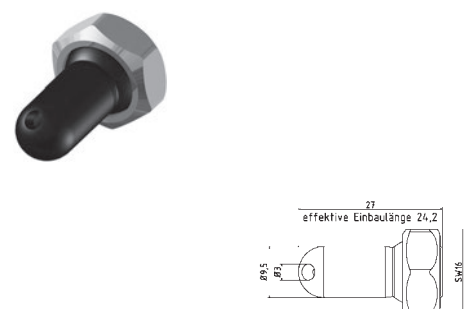
KU-1-DU-50
Kunststoff-Düse gerade Bohrung \varnothing 5,0 mm
plastic nozzle straight \varnothing 5,0 mm



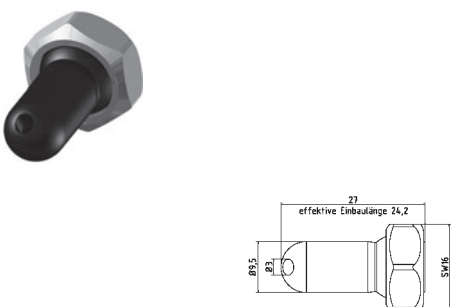
KU-1-DU-3-16
Kunststoff-Düse gerade Bohrung 3 x \varnothing 1,6 mm
plastic nozzle straight 3 x \varnothing 1,6 mm



KU-1-DU-72
Kunststoff-Düse mit Schlitz 7 x 2,0 mm
plastic nozzle straight with slit 7 x 2,0 mm

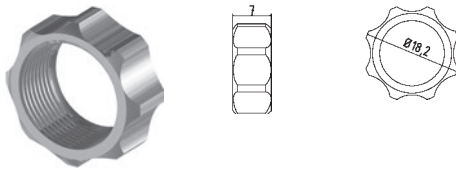


KU-1-DU-30
Kunststoff-Düse 30° Bohrung \varnothing 3 mm
plastic nozzle 30° drill hole \varnothing 3 mm



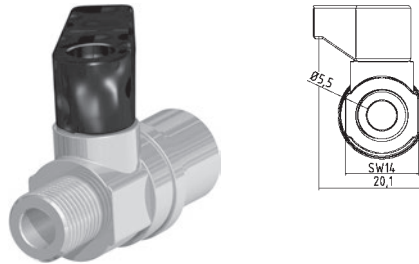
KU-1-DU-60
Kunststoff-Düse 60° Bohrung \varnothing 3 mm
plastic nozzle 60° drill hole \varnothing 3 mm

Zubehör | Accessories



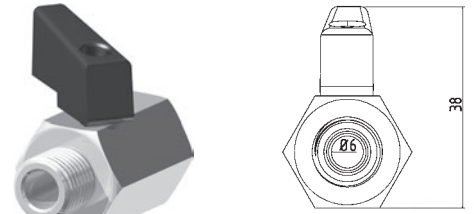
1-MU-HA

Mutter für Handverstellung
screw nut (hand feed)



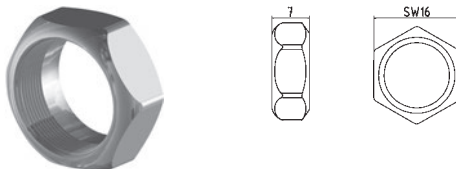
KH-18

Mini-Kugelhahn G1/8" Messing Verchromt
mini ball valve thread 1/8" brass chrome-plated



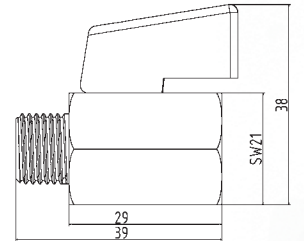
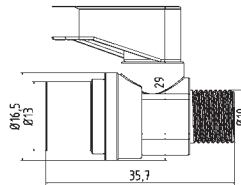
KH-14

Mini-Kugelhahn G1/4" Messing Verchromt
mini ball valve thread 1/4" brass chrome-plated



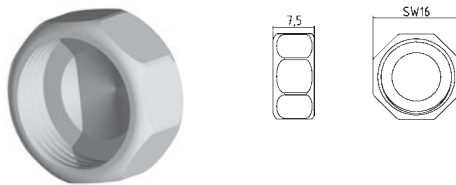
1-MU

Mutter Standard
screw nut (default)



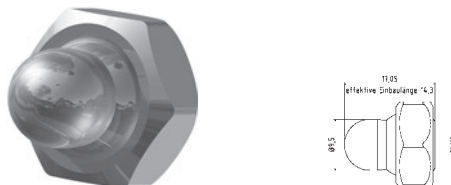
KH-14-SS

Mini-Kugelhahn G1/4" Edelstahl
mini ball valve thread 1/4" stainless steel



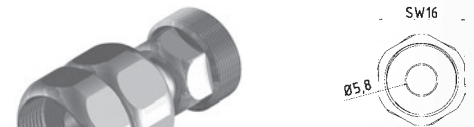
1-VK

Verschlusskappe Typ 1
cap type 1



1-VER

Verschlussstopfen m. Mutter für Duschelement
seal plug with screw nut for shower element



1-FP

Zwischenelement mit fester Position
(Schnellkupplung)
*Intermediate element with fixed position
(quick coupling)*



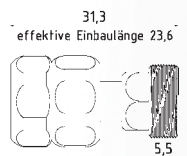
SW-11

Schlüssel aus Stahl SW11
open end wrench SW11

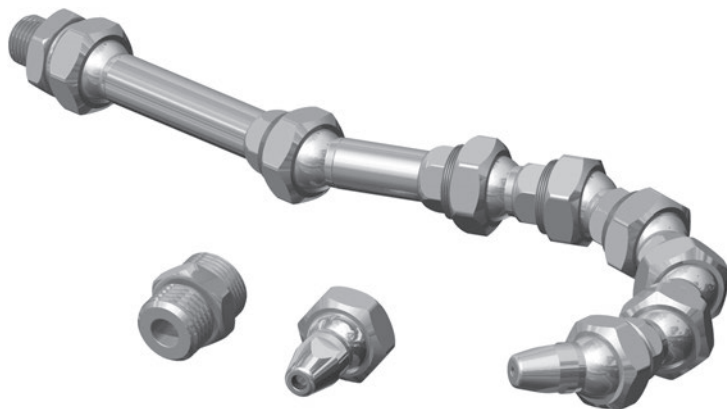


SW-16

Schlüssel aus Stahl SW16
open end wrench SW16



Grundset | Basic Set



1-GS

Grundset Typ1 1/4" System L = 220 mm
6 x 1-GE, 1 x 1-GE-2, 1 x 1-GE-3, 1 x 1-AD-18, 1 x 1-AD-14, 1 x 1-DU-16, 1 x 1-DU-32
basic set Type1 1/4" system l = 220 mm:
6 x 1-GE, 1 x 1-GE-2, 1 x 1-GE-3, 1 x 1-AD-18, 1 x 1-AD-14, 1 x 1-DU-16, 1 x 1-DU-32



1-GS-R

Ringdüsen Set (17 x 1-DU-R + 1 x 1-WV-R)
Ø = 80 mm erweiterbar
*ring nozzle set (17 x 1-DU-R + 1 x 1-WV-R)
Ø = 80 mm expendable*